

# MONTHLY MEMBERSHIP PROGRESS REPORT

LOCATION MINNESOTA

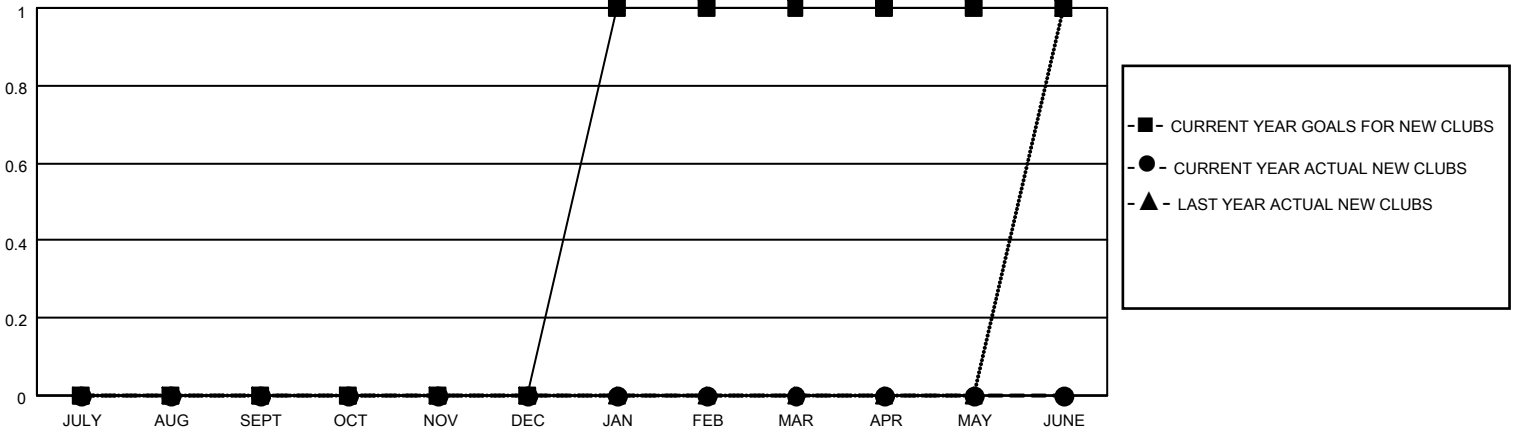
District 5M 7

Results as of: 6/30/2023

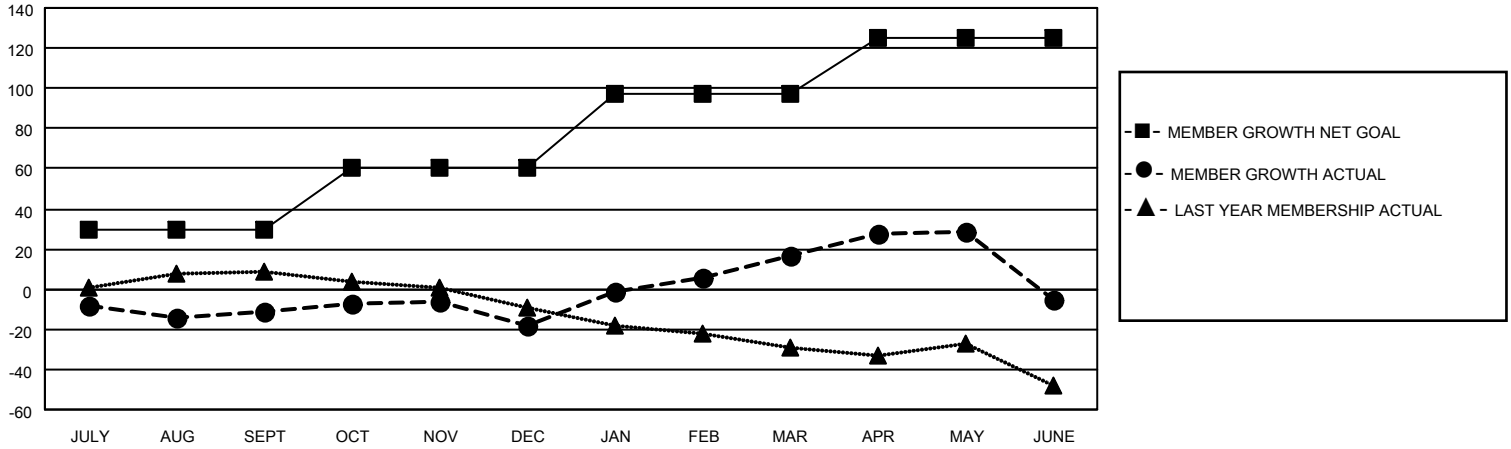
Clubs			
RESULTS FOR 2022-2023			
QUARTER	NEW CLUB GOAL	NEW CLUBS	DROPPED CLUBS
JULY/AUG/SEPT	0	0	0
OCT/NOV/DEC	0	0	0
JAN/FEB/MAR	1	0	0
APR/MAY/JUNE	0	0	0

Members			
RESULTS FOR 2022-2023			
QUARTER	MEMBER GROWTH NET GOAL	MEMBER GROWTH ACTUAL	DROPPED MEMBERS ACTUAL (including transfers)
JULY/AUG/SEPT	30	57	55
OCT/NOV/DEC	30	47	50
JAN/FEB/MAR	37	57	16
APR/MAY/JUNE	28	48	65

**GOALS AND ACTUAL NEW CLUBS CUMULATIVE**



**GOALS AND ACTUAL MEMBERS CUMULATIVE**



**DROPPED CLUBS: 0**

**45 CLUBS OF 52 ADDED 1 OR MORE NEW MEMBERS**

**GENDER DISTRIBUTION**

MALE	1,190 (69.67%)
FEMALE	513 (30.04%)
NON BINARY	0 (0.00%)
PREFER NOT TO ANSWER	5 (0.29%)

**DROPPED MEMBERS**

[CLICK HERE FOR CUMULATIVE MEMBERSHIP DATA](#)

DECEASED	17
CLUB CANCELLED	0
OTHER	169
<b>TOTAL</b>	<b>186</b>

TOTAL FAMILY UNIT MEMBERS	335
FAMILY MEMBERS PAYING HALF DUES	174